



## Michigan Pneumatic Model MP-2000X-F High-Speed Sander

Lightweight tool is perfect for finishing flat or contoured surfaces, touch-up, feather-edging and production sanding. Rugged construction for years of carefree service. **Equipped with 3", 4-1/2", 5-1/2" fiber pads.**

- 5403** 3" Fiber Pad
- 5404** 4-1/2" Fiber Pad
- 5405P** 5-1/2" Fiber Pad
- 110010** Disc Nut

Capacity .....	5"	Weight .....	1.75 lbs.
Free Speed .....	20000 rpm	Air Inlet Thread .....	1/4"
Length .....	5"	Avg. Air Consumption:	4 cfm



## Michigan Pneumatic Model MP-727-ST High Speed Sander

Designed for finishing flat or contoured surfaces. Ideal for touch-up, feather-edging and production sanding.

- 822028** 3" Fiber Pad
- 822029** 4-1/2" Fiber Pad
- 822030** 5-1/2" Fiber Pad
- 110010** Disc Nut

Capacity .....	5"	Weight .....	2.25 lbs.
Free Speed .....	18000 rpm	Air Inlet Thread .....	1/4"
Length .....	7-1/2"	Avg. Air Consumption:	4 cfm



## Michigan Pneumatic Model MP-844-S Orbital Sander - with Vacuum Pickup

Palm type sander features dust-free sanding for a cleaner work environment. Orbital action provides a smoother, finer finish for better results. Powerful, compact, lightweight, with low vibration action for operator comfort and higher productivity. Built-in adjustable speed regulator for versatility.

- 60334-6** 6" Vinyl Pad with Dust Extraction Holes

Capacity .....	6"	Weight .....	3 lbs.
Free Speed .....	10000 rpm	Air Inlet Thread .....	1/4"
Height .....	4"	Avg. Air Consumption:	6 cfm



## Michigan Pneumatic Model PGU-5 5" Pad Model PGU-6 6" Pad Palm Sander

Lightweight, powerful, quiet and rugged. Resilient rubber grip and polymer body provide a comfortable and ergonomic fit. Features integral dust extraction system, proven bearing design and interchangeable pads to fit any sanding application. **Additional pads available. Please specify pad size.**

- 4862-5** 5" Vinyl Pad
- 4162-5** 5" Vinyl Pad with Dust Extraction Holes
- 4862-6** 6" Vinyl Pad
- 4162-6** 6" Vinyl Pad with Dust Extraction Holes

Capacity .....	5" or 6"	Weight .....	2.5 lbs.
Free Speed .....	10000 rpm	Air Inlet Thread .....	1/4"
Height .....	5-1/2"	Avg. Air Consumption:	11 cfm



## Michigan Pneumatic Model MP-DA6-ST Random Orbital Sander

Ball bearing construction, balanced counterweights and a built-in speed regulator make this sander ideal for metal preparation.

**SP-005** 6" Vinyl Pad

Capacity .....	6"	Weight .....	4 lbs.
Free Speed .....	10000 rpm	Air Inlet Thread .....	1/4"
Length .....	8-3/4"	Avg. Air Consumption:	5 cfm



## National Detroit Model DA Dual Action Sander

Proven orbital action sander provides a smoother, scratch-free finish as the abrasives travel in a non-repeating path, reducing heat generation. Lightweight with built-in regulator. **Lower noise level, OSHA approved Model DAQ available. Model DA-DE with dust extraction system available. Additional 4", 5" and 6" pads also available. Please specify pad size.**

**4062-4** 4" Vinyl Pad    **4882-5** 5" Vinyl Pad with Dust Extraction Holes  
**4062-5** 5" Vinyl Pad    **4882-6** 6" Vinyl Pad with Dust Extraction Holes  
**4062-6** 6" Vinyl Pad

Capacity .....	4", 5" or 6"	Weight .....	4.125 lbs.
Free Speed .....	6000 rpm	Air Inlet Thread .....	1/4"
Length .....	8-1/4"	Avg. Air Consumption:	11 cfm

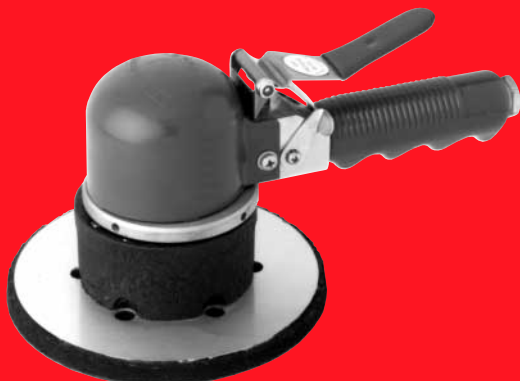


## National Detroit Model DCQ Disc Action Sander

Designed to speed production on light grinding and sanding to remove heavy grinder swirls. **Lower noise level, OSHA approved.**

**3021FP** 4" Felt Pad  
**3055** 5" Felt Pad

Capacity .....	4" or 5"	Weight .....	3.625 lbs.
Free Speed .....	12000 rpm	Air Inlet Thread .....	1/4"
Length .....	8"	Avg. Air Consumption:	4 cfm



## National Detroit Model 9600 Geared Sander

Features the same sanding action as the Model 900 with more power per square inch of paper. Aggressive for rough knock-down, but allows finesse for feather edging. Extremely smooth and quiet. The driven gear "floats" on a cushioned mounting, providing smoother control with the power of a gear driven design. **Model 9600DE with dust extraction system available. Additional 5" and 6" pads also available. Please specify pad size.**

**9450-5** 5" Vinyl Pad    **9677-5** 5" Hook & Loop Pad with D.E. Holes  
**9460-6** 6" Vinyl Pad    **9677-6** 6" Hook & Loop Pad with D.E. Holes

Capacity .....	5" or 6"	Weight .....	4.5 lbs.
Free Speed .....	9000 rpm	Air Inlet Thread .....	1/4"
Length .....	8"	Avg. Air Consumption:	14 cfm



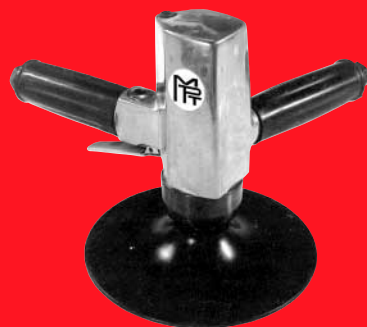
## Michigan Pneumatic Model MP-7635

### Vertical Sander

Ideal sander for automotive body and industrial work with power ranging from delicate feather-edging and full speed grinding. The V-grip handle, with fingertip lever power control, provides easy handling to reduce operator fatigue.

**829040** Pad Nut  
**731247** 7" Plastic Pad

Capacity .....	7"	Height .....	7-1/2"
Free Speed .....	4000 rpm	Weight .....	5.25 lbs.
Spindle Thread .....	5/8"-11	Air Inlet Thread .....	1/4"
Maximum HP .....	1.00	Avg. Air Consumption:	5 cfm



## Michigan Pneumatic Model MP-1265-U

### Vertical Sander

Features extra-heavy gearing for heavy-duty operation. Compact and lightweight design to get into hard to reach spots and reduced operator fatigue. Adjustable speed control allows delicate feather-edging to full speed sanding.

**829040** Pad Nut  
**731247** 7" Plastic Pad

Capacity .....	7"	Height .....	7-1/2"
Free Speed .....	4000 rpm	Weight .....	4.5 lbs.
Spindle Thread .....	5/8"-11	Air Inlet Thread .....	1/4"
Maximum HP .....	1.00	Avg. Air Consumption:	9 cfm



## Michigan Pneumatic Model MP-B332

### Vertical Sander - with Rubber Pad

Heavy-duty tool for steady production. May be used for disc sanding, cup wire brushing and cup wheel grinding. Ideal for cutting high spots and smoothing flat surfaces. **Please specify lever or butterfly throttle. Model MP-B332WW with wire wheel available.**

**R700-R** 7" Rubber Backing Pad

Capacity .....	7" Pad	Length .....	8-3/4"
Free Speed .....	6000 rpm	Height .....	7-5/8"
Spindle Thread .....	5/8"-11	Weight .....	7.3 lbs.
Maximum HP .....	1.20	Air Inlet Thread .....	3/8"



## National Detroit Model 900

### 8" Geared Sander/Grinder

Gear driven sander moves with positive rotation and secondary oscillating action. Fast stock removal prevents normal grinder scratch patterns. Designed for applications between grinding and finish sanding. Features a built-in regulator. **Model 900DE with dust extraction system available.**

**4080VP** 8" Vinyl Pad    **4088** 8" Vinyl Pad with Dust Extraction Holes

Capacity .....	8"	Weight .....	4.75 lbs.
Free Speed .....	800-9000 rpm	Air Inlet Thread .....	1/4"
Abrasive Area .....	50 sq. in.	Avg. Air Consumption:	14 cfm



## National Detroit Model 9900

### Buffer/Sander

Lightweight buffer/sander removes paint up to 3.5 times faster than other sanders. T-handle motor cover and soft grip handle provide ergonomic comfort. **Model 9900DE with dust extraction system available.**

**9591** 6" Buffing Pad  
**9980** 6" Vinyl Pad

Capacity .....	6" Buffer/6" Pad	Weight .....	5 lbs.
Free Speed .....	9000 rpm	Air Inlet Thread .....	1/4"
Abrasive Area .....	28 sq. in.	Avg. Air Consumption:	14 cfm



TA99155 Idler Pulley Assembly

## Michigan Pneumatic Model MP-10A-ST Belt Sander

Small, lightweight belt sander, ideal for all materials, eliminates filing. Goes deep into hard to reach places, corners and spherical surfaces.

**61122** 40 Grit Belt    **61125** 80 Grit Belt    **61127** 120 Grit Belt  
**61124** 60 Grit Belt    **61126** 100 Grit Belt

Belt Size .....	3/8" x 13"	Length (max.) .....	10-7/16"
Free Speed .....	16000 rpm	Weight .....	1.7 lbs.
Height .....	2"	Air Inlet Thread .....	1/4"
Maximum HP .....	0.4	Avg. Air Consumption:	14 cfm



TA90514 Idler Pulley Assembly

## Michigan Pneumatic Model MP-20S-ST Belt Sander

Small, lightweight air sander will sand all jobs, all materials with amazing speed and ease. No surface escapes its all-surface capability. Levels and contours, even in corners. Adjustable handle rotates 360°. Change belts in seconds.

**60129** 40 Grit Belt    **60132** 80 Grit Belt    **60134** 120 Grit Belt  
**60131** 60 Grit Belt    **60133** 100 Grit Belt

Belt Size .....	3/4" x 20-1/2"	Length (max.) .....	18-1/2"
Free Speed .....	16000 rpm	Weight .....	3.1 lbs.
Height .....	2-23/64"	Air Inlet Thread .....	1/4"
Maximum HP .....	0.6	Avg. Air Consumption:	18 cfm



TA91522 Idler Pulley Assembly

## Michigan Pneumatic Model MP-30S-ST Belt Sander

The most efficient adjustable belt sander ever developed, with a new, silent motor. Sands all materials with speed and ease. Levels and contours, even in corners. Maximum efficiency without operator fatigue.

**TP04084-0** 60 Grit Belt    **TP04086-0** 100 Grit Belt  
**TP04085-0** 80 Grit Belt

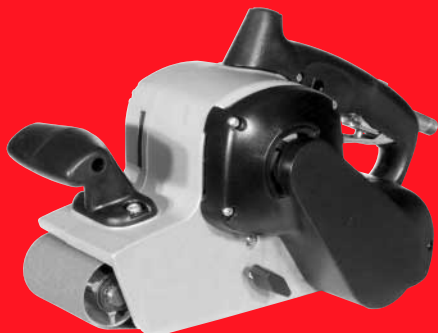
Belt Size .....	1-3/16" x 21"	Length (max.) .....	19-1/4"
Free Speed .....	12000 rpm	Weight .....	4.9 lbs.
Height .....	4-1/8"	Air Inlet Thread .....	3/8"
Maximum HP .....	0.7	Avg. Air Consumption:	24 cfm



## Nitto Kohki Model AHL-60 Grain Sander

Compact and lightweight to operate without pressure on workpieces to produce various in-line scratch patterns. Removes and blends scratches, rust, heat discoloration, top coat or paint on processed or formed stainless steel. Useful for fabricators of kitchen and bath equipment, commercial food processing, commercial lighting and communication equipment, health and medical equipment and railroad passenger cars.

Belt Size .....	2-3/8" x 10-3/8"	Length (max.) .....	9-1/2"
Free Speed .....	4920 ft./min.	Weight .....	3.7 lbs.
Height .....	5"	Air Inlet Thread .....	1/4"
Maximum HP .....	1.00	Avg. Air Consumption:	15.9 cfm



## Michigan Pneumatic Model MP-MVM3562 Belt Sander

Comfortable and well balanced. Features easy fingertip tracking and belt changing. Excellent power and speed for any belt sanding operation. Ideal for working around water and in heavy dust environments. **Uses standard 3" x 21" belts, 100 grit or finer.**

Belt Size .....	3" x 21"	Length (max.) .....	13"
Free Speed .....	2600 rpm	Weight .....	9.25 lbs.
Height .....	8"	Air Inlet Thread .....	1/4"
Maximum HP .....	1.25	Avg. Air Consumption:	29 cfm



## Nitto Kohki Model B-10B

### Belt Sander

Small, lightweight belt sander, ideal for all materials, eliminates filing. Goes deep into hard to reach places, corners and spherical surfaces.

<b>61122</b>	40 Grit Belt	<b>61125</b>	80 Grit Belt	<b>61127</b>	120 Grit Belt
<b>61124</b>	60 Grit Belt	<b>61126</b>	100 Grit Belt		

Belt Size .....	3/8" x 13"	Length (max.) .....	10-7/16"
Free Speed .....	16000 rpm	Weight .....	1.7 lbs.
Height .....	2"	Air Inlet Thread .....	1/4"
Maximum HP .....	0.4	Avg. Air Consumption:	14 cfm



TA99155 Idler Pulley Assembly

## Nitto Kohki Model B-20C

### Belt Sander

Small, lightweight air sander will sand all jobs, all materials with amazing speed and ease. No surface escapes its all-surface capability. Levels and contours, even in corners. Adjustable handle rotates 360°. Change belts in seconds.

<b>60129</b>	40 Grit Belt	<b>60132</b>	80 Grit Belt	<b>60134</b>	120 Grit Belt
<b>60131</b>	60 Grit Belt	<b>60133</b>	100 Grit Belt		

Belt Size .....	3/4" x 20-1/2"	Length (max.) .....	18-1/2"
Free Speed .....	16000 rpm	Weight .....	3.1 lbs.
Height .....	2-23/64"	Air Inlet Thread .....	1/4"
Maximum HP .....	0.6	Avg. Air Consumption:	18 cfm



TA90514 Idler Pulley Assembly

## Nitto Kohki Model B-30A

### Belt Sander

The most efficient adjustable belt sander ever developed, with a new, silent motor. Sands all materials with speed and ease. Levels and contours, even in corners. Maximum efficiency without operator fatigue.

<b>TP04084-0</b>	60 Grit Belt	<b>TP04086-0</b>	100 Grit Belt
<b>TP04085-0</b>	80 Grit Belt		

Belt Size .....	1-3/16" x 21"	Length (max.) .....	19-1/4"
Free Speed .....	12000 rpm	Weight .....	4.9 lbs.
Height .....	4-1/8"	Air Inlet Thread .....	1/4"
Maximum HP .....	0.7	Avg. Air Consumption:	24 cfm



TA91522 Idler Pulley Assembly

## Nitto Kohki Model FS-50A

### Free Sander

Compact and lightweight with low air consumption for big jobs and tight spots. Rugged construction for continuous operation. Perfect for surface finishing wood and thin plates or de-burring plastic. Features quick change paper clips for easy mounting. **Low vibration motor reduces operator fatigue.**

Capacity .....	2-3/4" x 4-1/2"	Weight .....	1.1 lbs.
Free Speed .....	15000 rpm	Air Inlet Thread .....	1/4"
Abrasive Area .....	12.5 sq. in.	Avg. Air Consumption:	4.9 cfm



## Nitto Kohki Model FS-100C

### Free Sander

Compact and lightweight with low air consumption for big jobs and tight spots. Rugged construction for continuous operation. Perfect for surface finishing wood and thin plates or de-burring plastic. Features quick change paper clips for easy mounting. **Low vibration motor reduces operator fatigue.**

Capacity .....	4-1/2" x 5-1/2"	Weight .....	1.1 lbs.
Free Speed .....	20000 rpm	Air Inlet Thread .....	1/4"
Abrasive Area .....	24 sq. in.	Avg. Air Consumption:	7.1 cfm





## Michigan Pneumatic Model MP-865-ST

### Orbital Action Sander/Jitterbug

Heavy-duty sander is ideal for body and paint shops. 3/16" orbital stroke provides a swirl-free finish. Powerful, fully enclosed motor. Balanced for vibration-free performance. Ideal for wet and dry sanding.

Capacity .....	3-2/3" x 9"	Weight .....	4.5 lbs.
Free Speed .....	6500 rpm	Air Inlet Thread .....	1/4"
Abrasive Area .....	25 sq. in.	Avg. Air Consumption:	7 cfm



## National Detroit Model 150 & Model 400

### Orbital Action Sanders

Powerful, versatile, dependable, quiet sanders work on the principle of circular movement, with a 3/16" orbital stroke. Ideal for metal or wood finishing jobs. Great for hard to reach areas.

Model	150	400
Capacity	3" x 8"	3-2/3" x 9"
Free Speed	4000-6000 rpm	4000-6000 rpm
Abrasive Area	18 sq. in.	25 sq. in.
Weight	3.875 lbs.	4.5 lbs.
Air Inlet Thread	1/4"	1/4"
Avg. Air Consumption	7 cfm	7 cfm



## Michigan Pneumatic Model MP-0065-ST

### Straight Line Sander/File

The "President" features double acting pistons and a four cylinder driving system. As the dual pistons constantly work in alternating opposition to one another, there is no dead center, providing unparalleled power on the job and fatigue-free operation.

Capacity .....	2-3/4" x 17-1/4"	Weight .....	6.5 lbs.
Free Speed .....	3300 rpm	Air Inlet Thread .....	1/4"
Abrasive Area .....	40 sq. in.	Avg. Air Consumption:	6 cfm

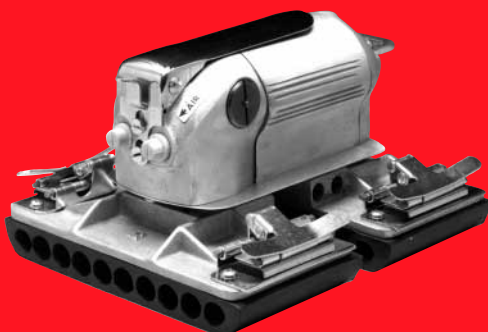


## National Detroit Model 600

### Straight-Line Action Sander

Single pad sander will boost production and provide a better finish. Rapid stock removal with built-in water spray attachment. Paper change is simple and quick. Ideal for wet sanding. **OSHA approved.**

Capacity .....	3-2/3" x 9"	Weight .....	5.375 lbs.
Free Speed .....	3200 rpm	Air Inlet Thread .....	1/8"
Abrasive Area .....	25 sq. in.	Avg. Air Consumption:	7 cfm



## National Detroit Model 300

### Straight-Line, Two-Pad Sander

Double pad sander will boost production and provide the best finish possible. Rapid stock removal with built-in water spray attachment. Ideal for wet sanding. Six different pads available, please specify. Meets OSHA noise level standards. **Price includes shoes and pads.**

Capacity .....	3-2/3" x 9"	Weight .....	6 lbs.
Free Speed .....	2250 rpm	Air Inlet Thread .....	1/4"
Abrasive Area .....	50 sq. in.	Avg. Air Consumption:	7 cfm